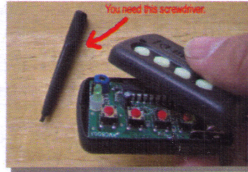
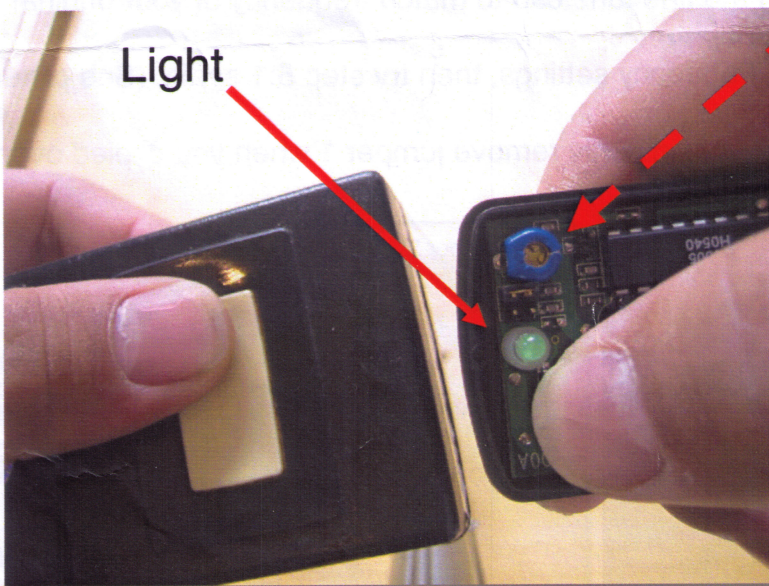


Quick Guide

1. Open Remocon.



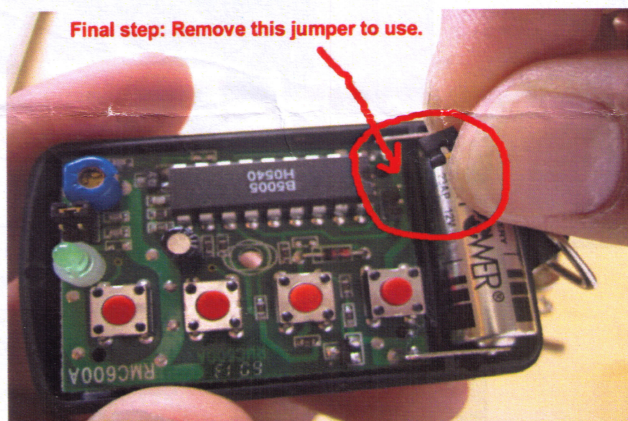
2. Take Remocon and point directly at your original garage remote. Then press both remotes button *simultaneously*, while adjusting the cap with the screw driver to get the brightest blinking LED. Once you see remocon light *blink 3 times*, the frequency is copied over. (If not, go to step 5)



Adjustable Cap

If you don't see light, you must turn the cap to get the light.

3. Remove programming jumper to use.



Fine tune remote range

- After you have removed the programming jumper, get close to the garage opener you are controlling and press the button on the remote you've just program. Move away from the garage opener while pressing the button until the signal is not triggering the garage opener. Now you can fine tune the adjustable cap until it starts triggering. Move away some more and adjust some more to optimize your distance.

Trouble Shooting Guide

- If it doesn't work, Here is what you need to check:
 - Did you adjust the fine tune cap to get brightest light? You need to have a second person use the **small screw driver** very very slowly adjust the **fine tune cap** to match frequency of your original remote. (See picture A)
 - Try different frequency settings, then try step 5:1 again. (See picture B)
 - Make Jumper 1 is in. Only remove jumper 1 when you copied over. (See picture C)

